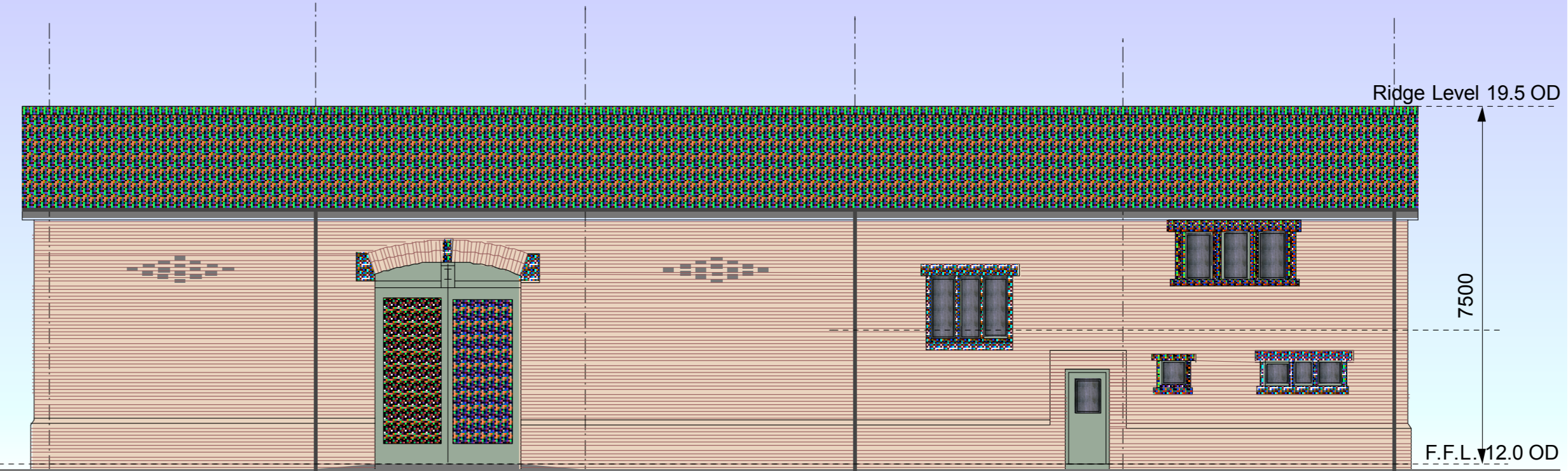


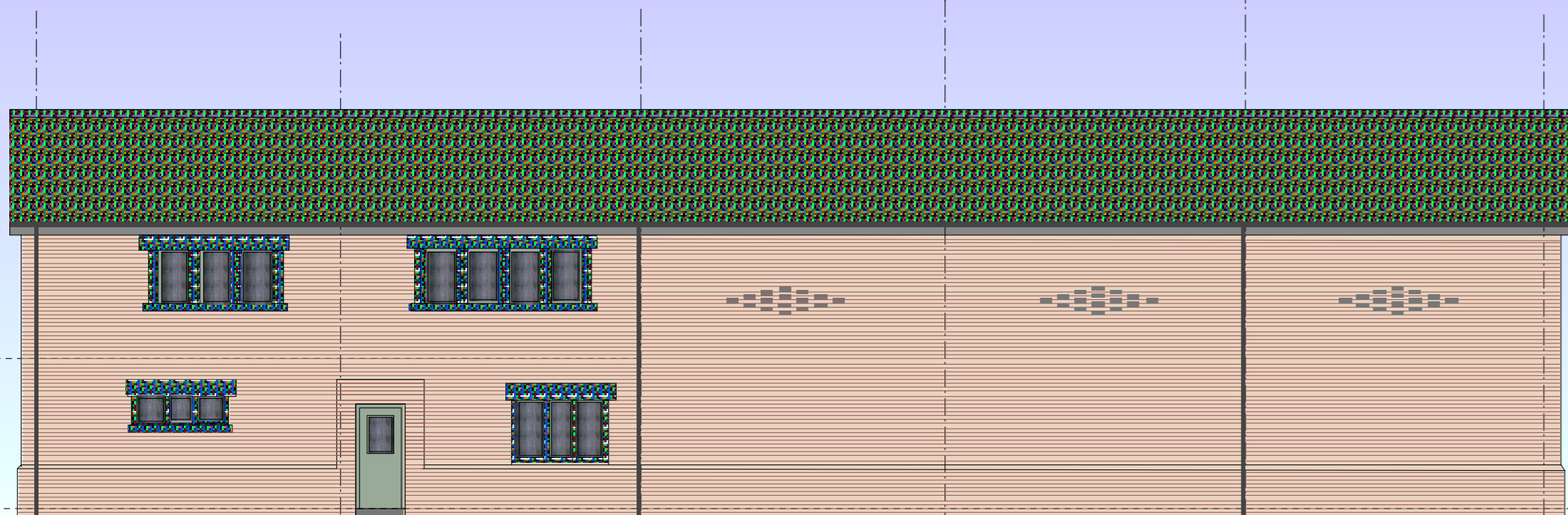
Proposed Security Gatehouse



Refurbished Farmhouse



North East Elevation

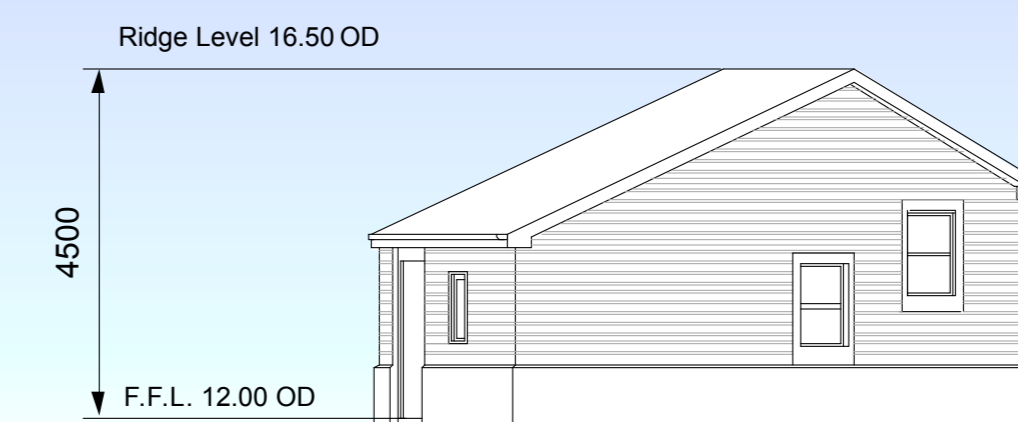


South West Elevation

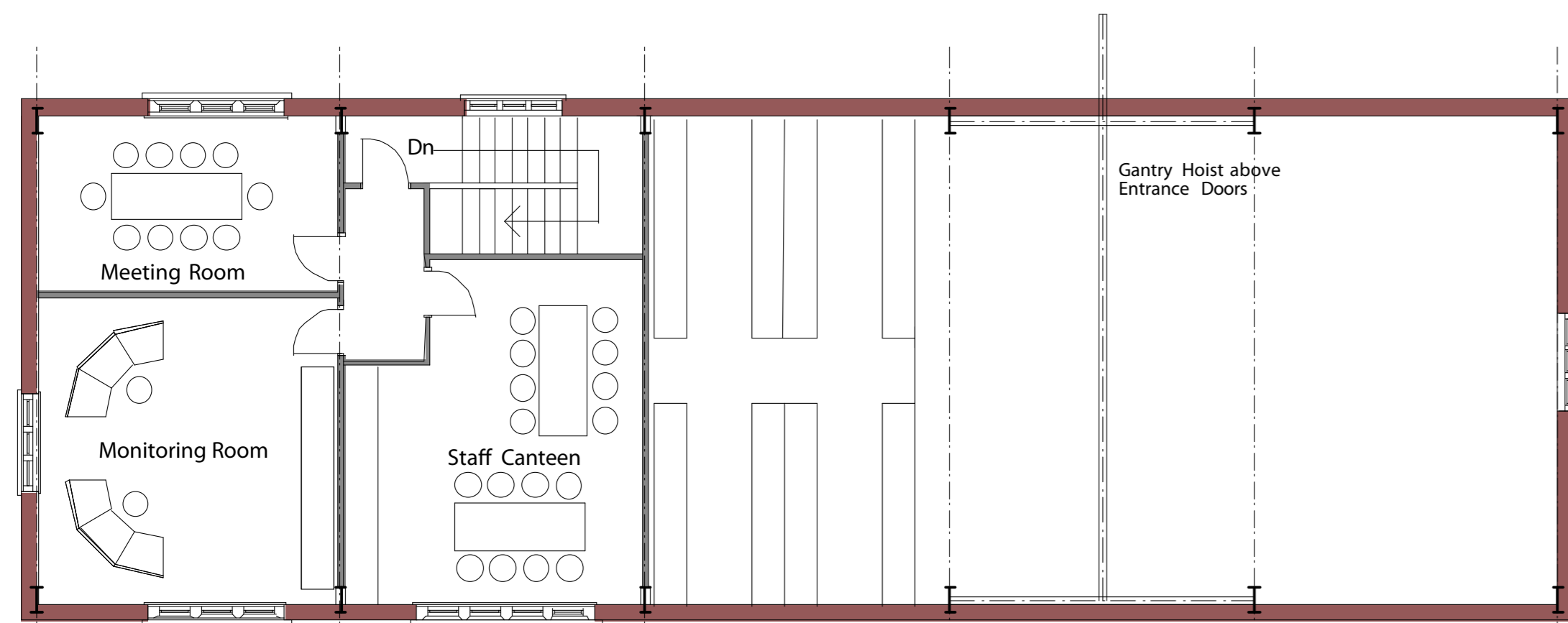
Materials for proposed barn rebuild :-
 Blue Slated roof pitches
 Rustic Red Facing Bricks to all elevations
 Sandstone lintols, cills and mullions to all windows



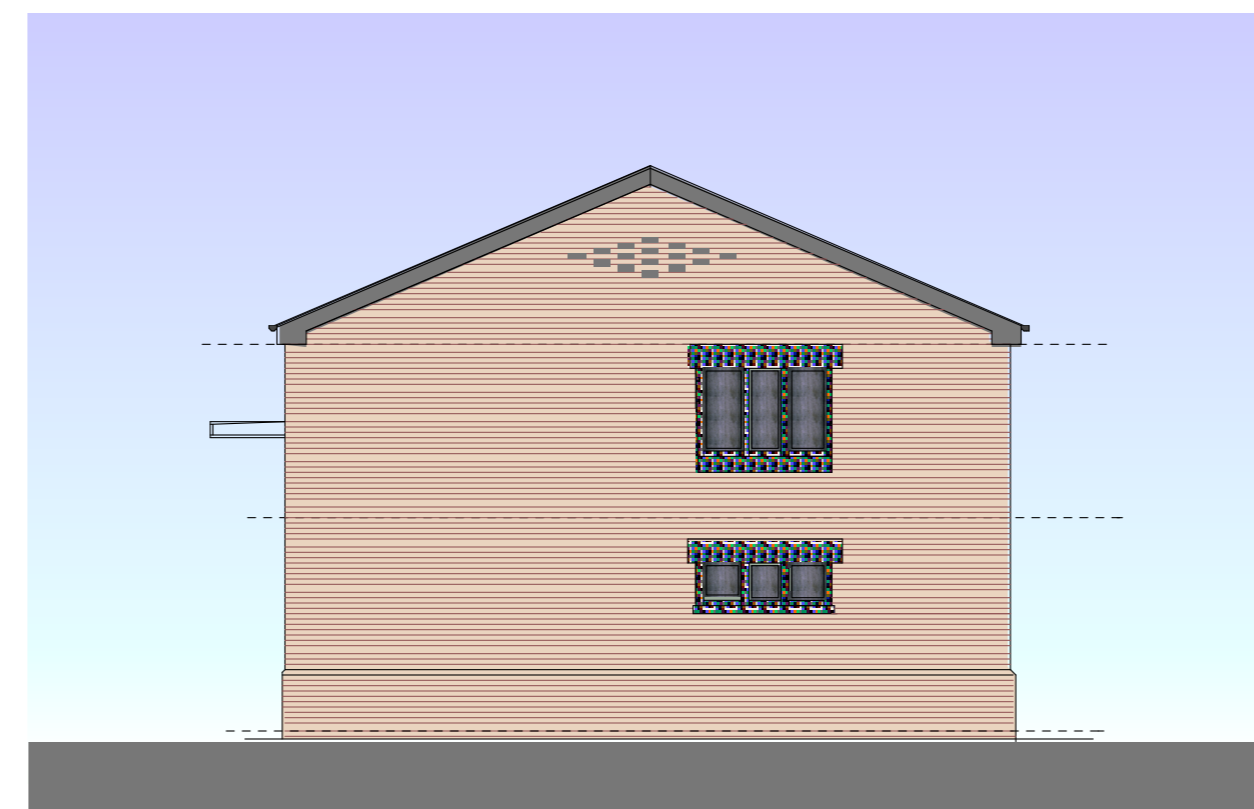
Refurbished Farmhouse



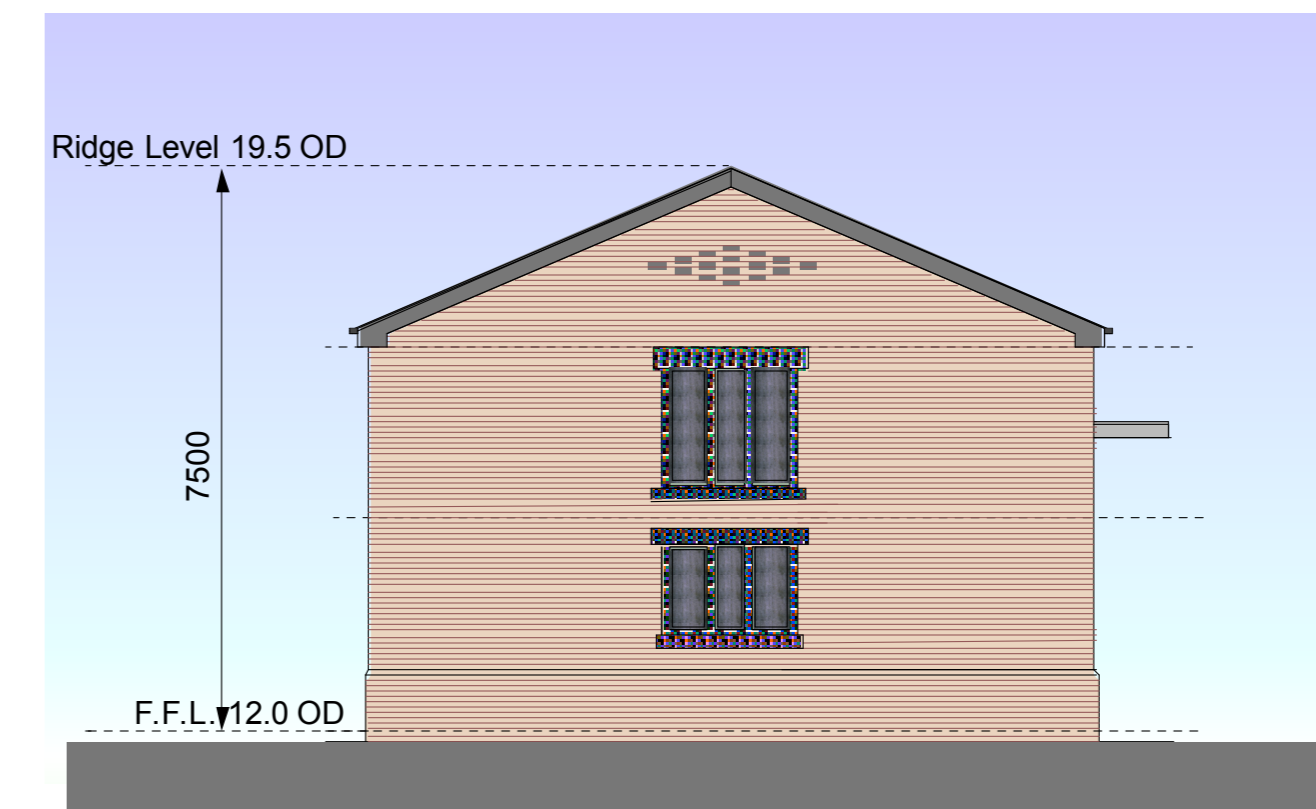
Proposed Security Gatehouse



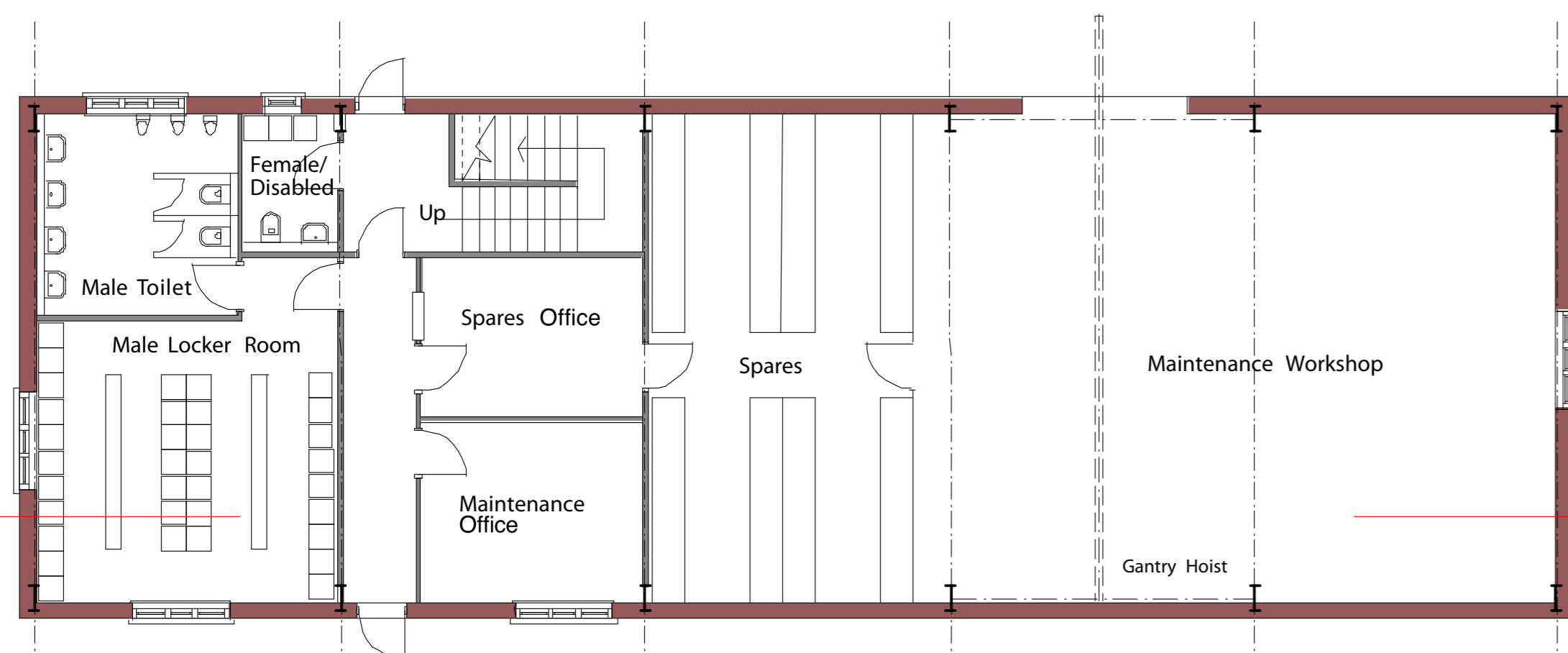
First Floor Plan Gross Floor Area 100 sq. m



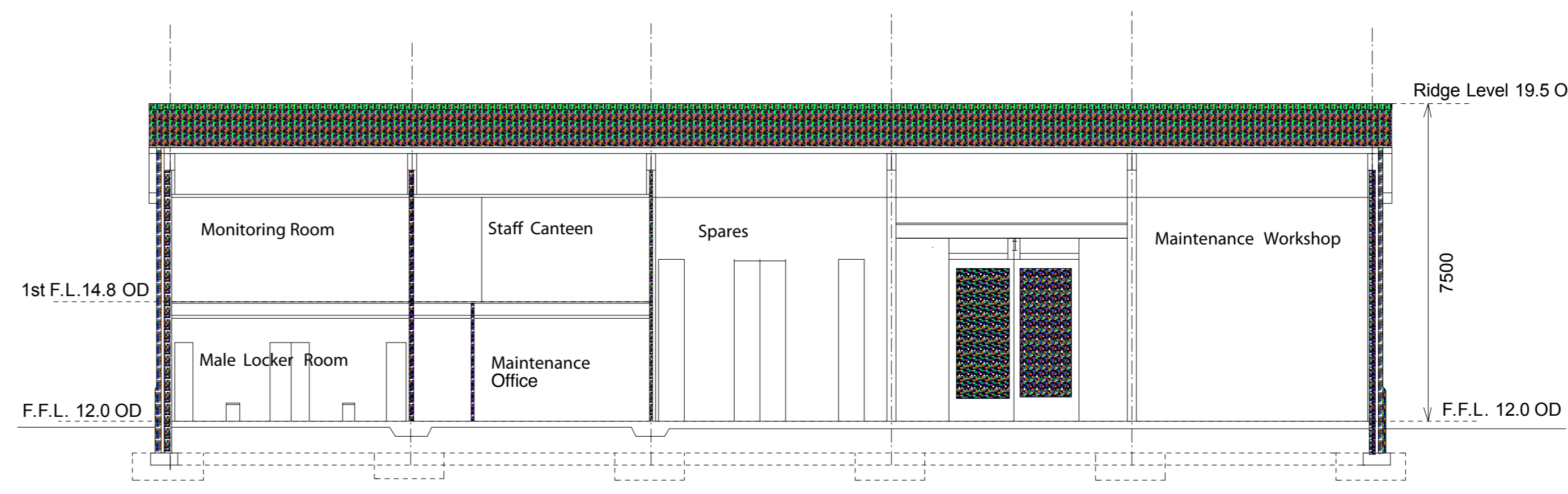
North West Elevation



South East Elevation



Ground Floor Plan Gross Floor Area 250 sq. m



Section on Line AA

Project Number

Maps reproduced from Ordnance Survey material with the permission of Ordnance Survey on behalf of the Controller of Her Majesty's Stationary Office © Crown copyright. Unauthorised reproduction infringes Crown copyright and may lead to prosecution or civil proceedings. All rights reserved. Reference Number 100050350

Internal arrangements for the buildings are indicative

Rev.	Date	Diemions Added	B.G/S
B	Oct 2011	Diemions Added	B.G/S
A	July 2011	Notes added	B.G/S

Rev. Date Approved



Halite Energy Group Limited
 Unit 5 St. George's Court
 St. George's Park
 Kirkham PR4 2EF Tel. No. 01772 672244

Project Name **Preesall Underground Gas Storage Facility**

Drawing Title **Regulation [5(2)(o)] Entrance Facilities Proposed Barn Rebuild**

Scale 1:100 @ A1 Date Jan 2011 Drawn JBS Approved BS/BG

Figure **1.37** Rev **B**

This drawing and the information contained thereon is the property of Halite Energy Group Limited and is lent on condition that it will not be disclosed, directly or indirectly nor used for any purpose other than that which is specifically furnished.